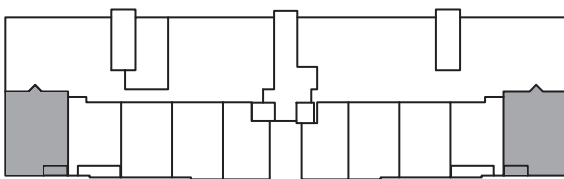


# The Manchester

- 1,149 Sq. Feet
- Balcony 47 sq. ft.
- 2 Bedroom
- 2 Bath



1ST FLOOR



Plans and furnishings are for marketing purposes only, and are not to scale. Please inspect construction, subdivision, utility, landscape and other plans available through leasing center for complete and specific information. Actual locations may vary and items shown or not shown on this place are subject to errors, omissions and field changes.

\*All units can be reasonably adapted for handicap accessibility for an extra charge.



**PARK  
LANE**  
AT GARDEN STATE PARK



1 Park Lane Boulevard  
Cherry Hill, NJ 08002  
Phone: 856.662.1600