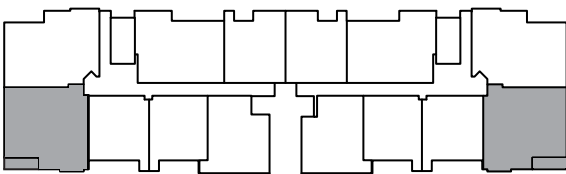


The Westminster

- 1,462 Sq. Feet
- Balcony 95 sq. ft.
- 2 Bedroom
- 2 Bath



2ND-5TH FLOOR



**PARK
LANE**
AT GARDEN STATE PARK

Plans and furnishings are for marketing purposes only, and are not to scale. Please inspect construction, subdivision, utility, landscape and other plans available through leasing center for complete and specific information. Actual locations may vary and items shown or not shown on this place are subject to errors, omissions and field changes.

*All units can be reasonably adapted for handicap accessibility for an extra charge.



1 Park Lane Boulevard
Cherry Hill, NJ 08002
Phone: 856.662.1600